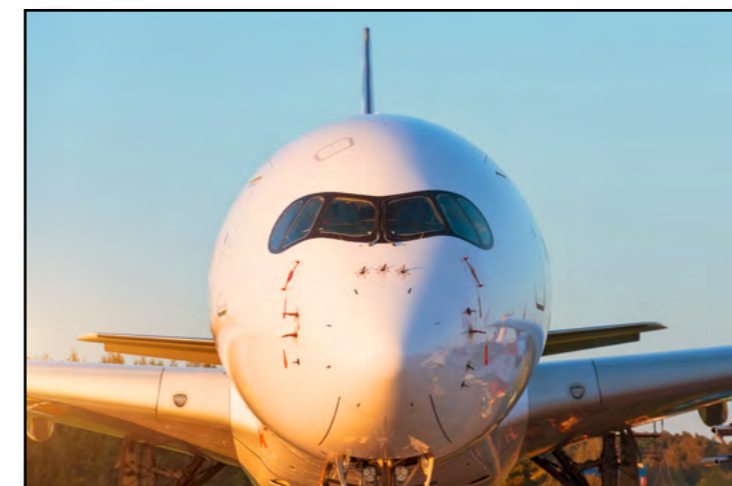
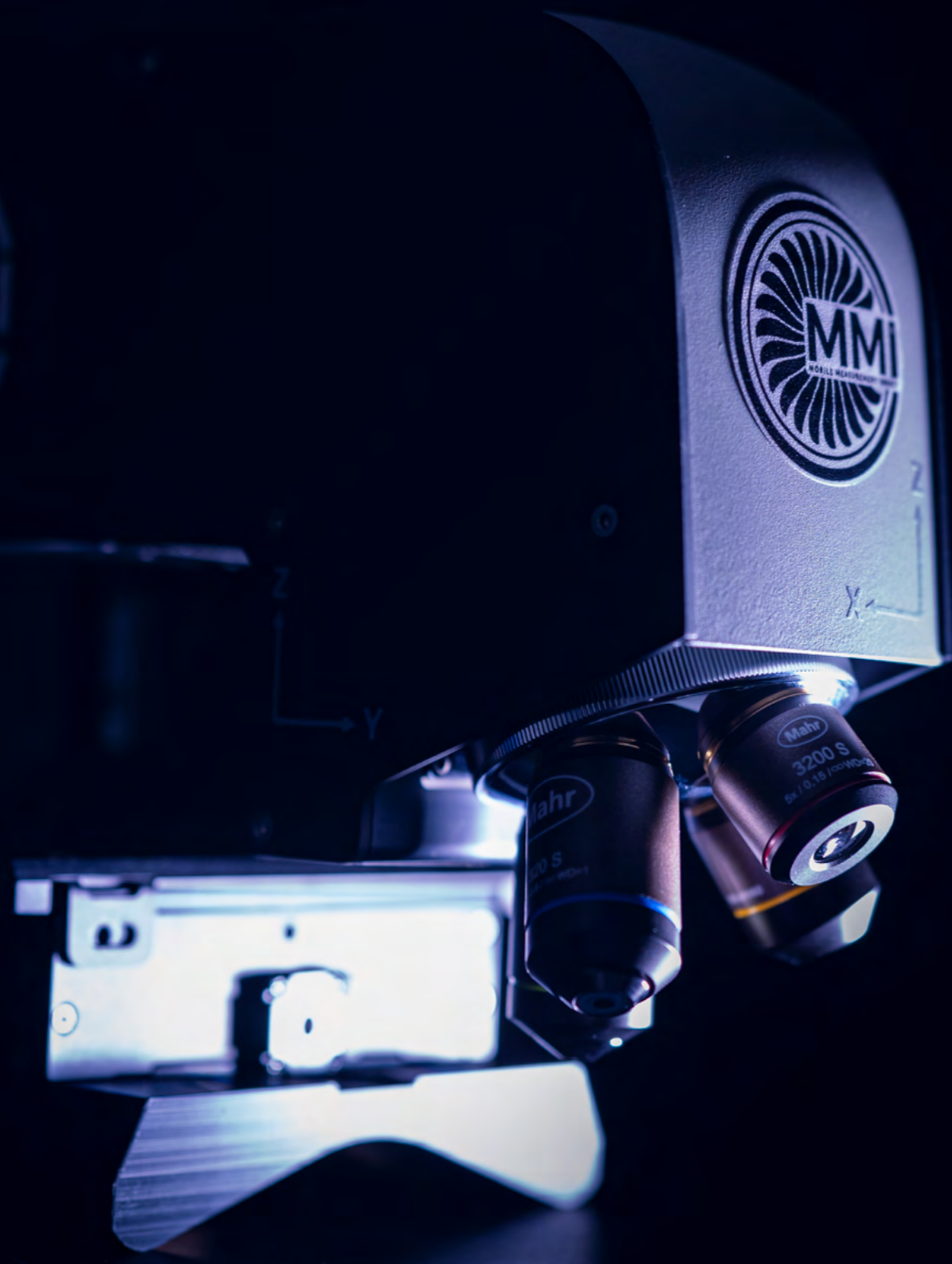




**MOBILE
MEASUREMENT
IMPACT**

***THE BRAND DEDICATED
TO YOUR
AIRWORTHINESS***

**THE FIRST PORTABLE DEVICE
FOR THE MEASUREMENT AND
CONTROL OF AIRCRAFT IMPACTS**



**DIRECT & FAST
MEASUREMENT
ON ALL SUPPORTS**



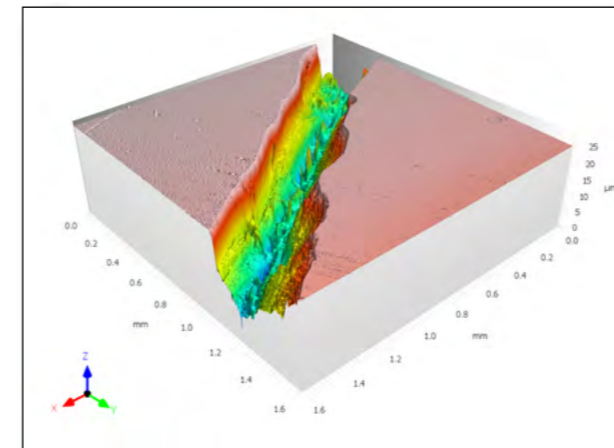
WINDSHIELD / STRUCTURE / BLADE
ROTOR/ LANDING GEAR / WEAR PARTS
ETC

THE GUARANTEE OF YOUR AIRWORTHINESS



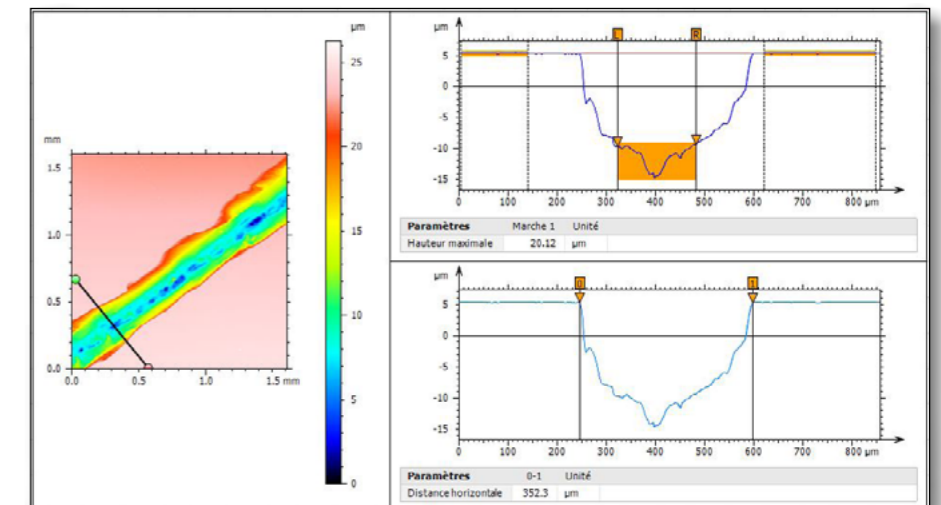
**MOBILE
CONFOCAL MICROSCOPE**
x5 x10 x20 x50 x100
INTERCHANGEABLE OBJECTIVES

3D MEASUREMENTS & ANALYSIS



**MEASUREMENT
ACCURACY
+/- 0.0001 MM**

**AN IMPACT
MEASUREMENT
IN LESS THAN
5 MINUTES**

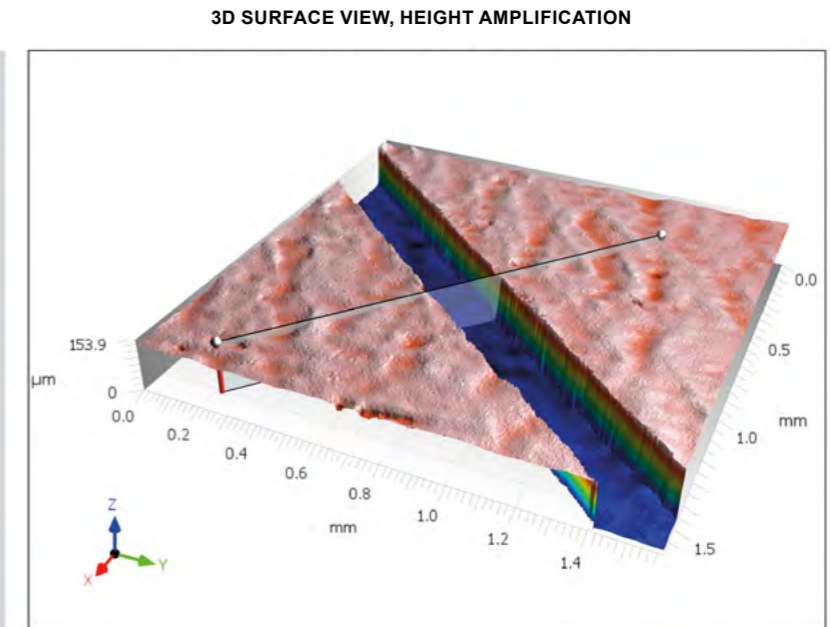




INTERIOR SCRATCH MEASUREMENT ON H175 WINDSHIELD



Numéro d'échantillon:	1
Utilisateur:	user
Date:	29/10/2021
<hr/>	
Système de mesure:	MMI
Objectif / capteur:	1600S
Stitching:	1x1
<hr/>	
Axe:	X
Longueur:	1.597 mm
Pas:	1.333 μm
<hr/>	
Axe:	Y
Longueur:	1.597 mm
Pas:	1.333 μm
<hr/>	
Notes:	/

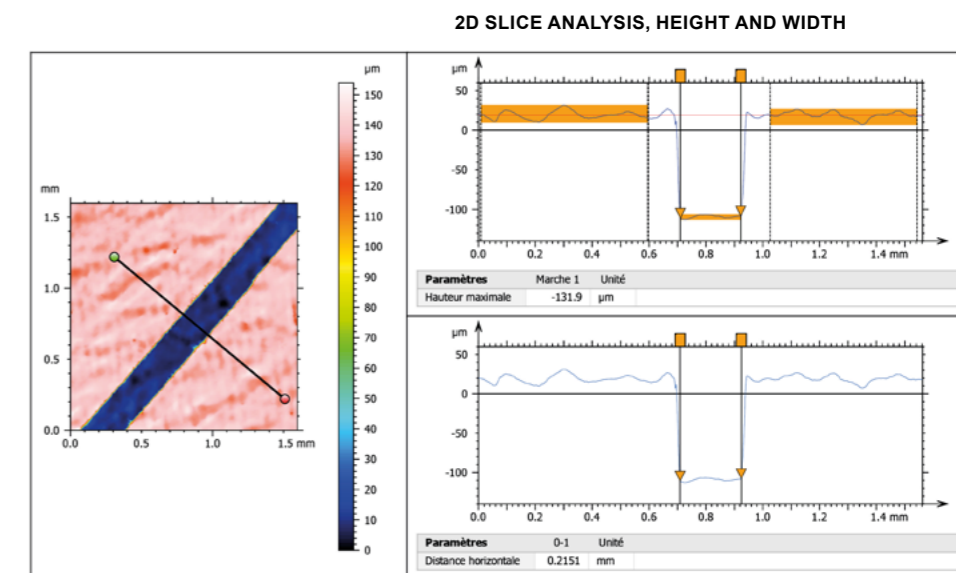
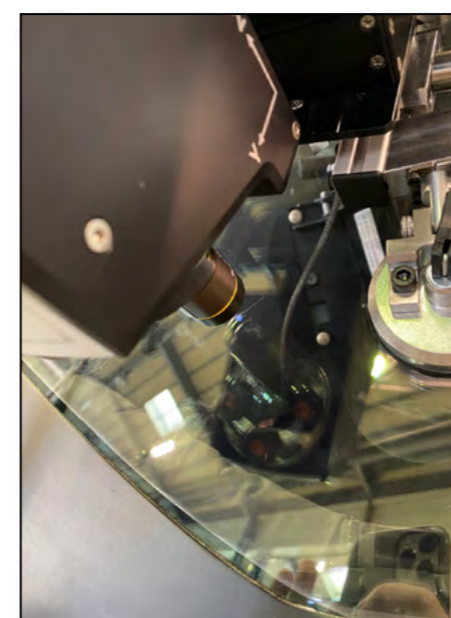
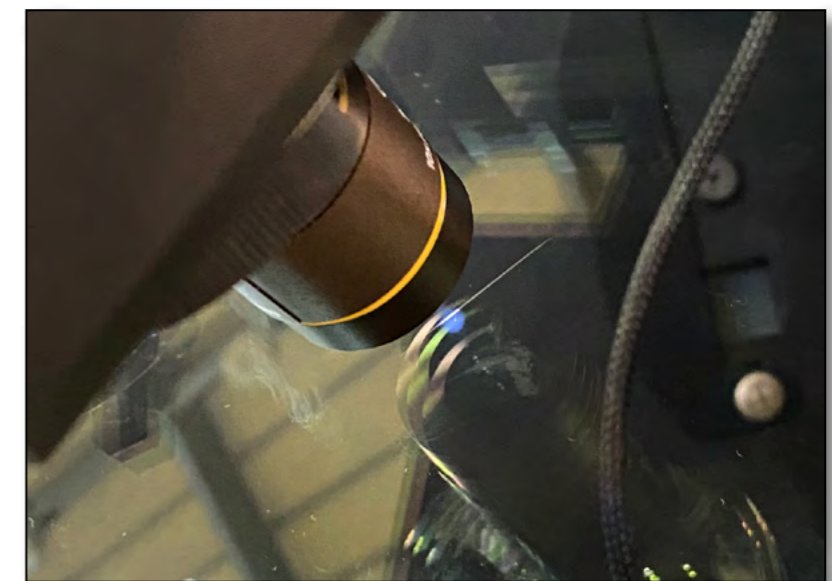


INTERIOR scratch measurement of an H175 windshield from the **OUTSIDE!**

(Measurement by interior is not authorized by the manufacturer)

The maximum allowable depth for this type of damage is 200 μm .
The measured value is 131.9 μm .

- No windshield change
- No downtime
- Preserved airworthiness







WWW.MMI-AEROSPACE.COM

contact@mmi-aerospace.com